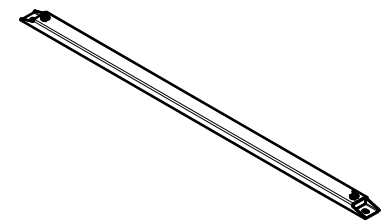
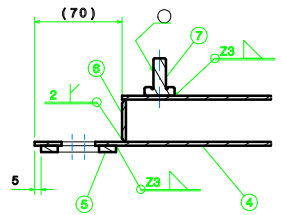


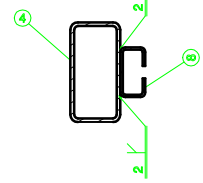
Isometric view



Section cut B-B
Scale: 1:2
(Typical)



Section cut C-C
Scale: 1:2



GENERAL WELDING REQUIREMENTS

Welding classification and controlling according to technical specification BLUE_TS_WLD_01

WELDING PERFORMANCE CLASS CP C2

Painting in accordance with TD-GZ.10.0055
-Protect from painting all threaded holes and machined surfaces marked with ○
-Protect only with primer all surfaces marked with ◎

8	Bending Sheet	1	GZ11.07.21.10010	S866J2 EN10025	-	0,777 kg
7	Block	2	GZ10.07.07.10005	Z50PM 18-10 EN10088	-	0,048 kg
6	Plate	2	GZ10.07.07.11005	S866J2 EN10025	-	0,056 kg
5	Plate	2	GZ10.07.07.11004	S866J2 EN10025	-	0,001 kg
4	Tube	1	GZ10.07.17.10002	S866J2H EN10210	-	0,758 kg
No	Part No / Designation	Part No / Designation	Part No / Designation	Part No / Designation	Part No / Designation	Part No / Designation
ISO 21020-1	ISO 8016	ISO 2053	ISO 2708	ISO 12708	ISO 12708	ISO 12708
EN 10088-2	EN 10088-2	EN 10088-2	EN 10088-2	EN 10088-2	EN 10088-2	EN 10088-2
Approved	L.Giovinazzo	20/08/2023	Scale	1:5		
Checked	M.Borio	20/08/2023				
Prepared	F.Falini	20/08/2023				
Spiral Frame				GZ10.07.21.10000		
Date: 20/08/2023				Sheet: 1/1		

Copyright © 2023 by TURASAS. All rights reserved. No part of this document may be reproduced without prior written permission of TURASAS. The information contained herein is confidential and intended for internal use only. It is not to be distributed outside the company without prior written permission of TURASAS. The information contained herein is confidential and intended for internal use only. It is not to be distributed outside the company without prior written permission of TURASAS.